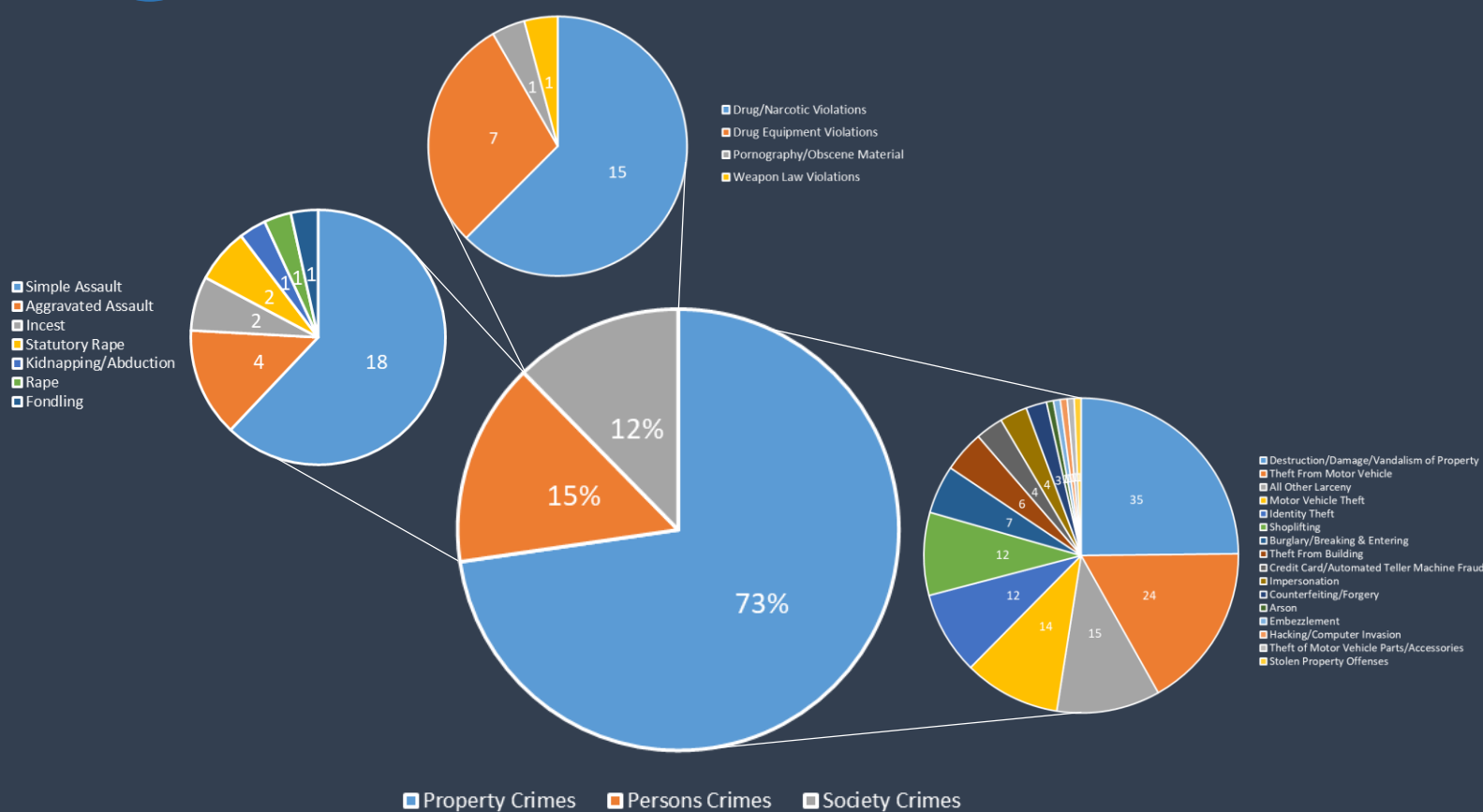
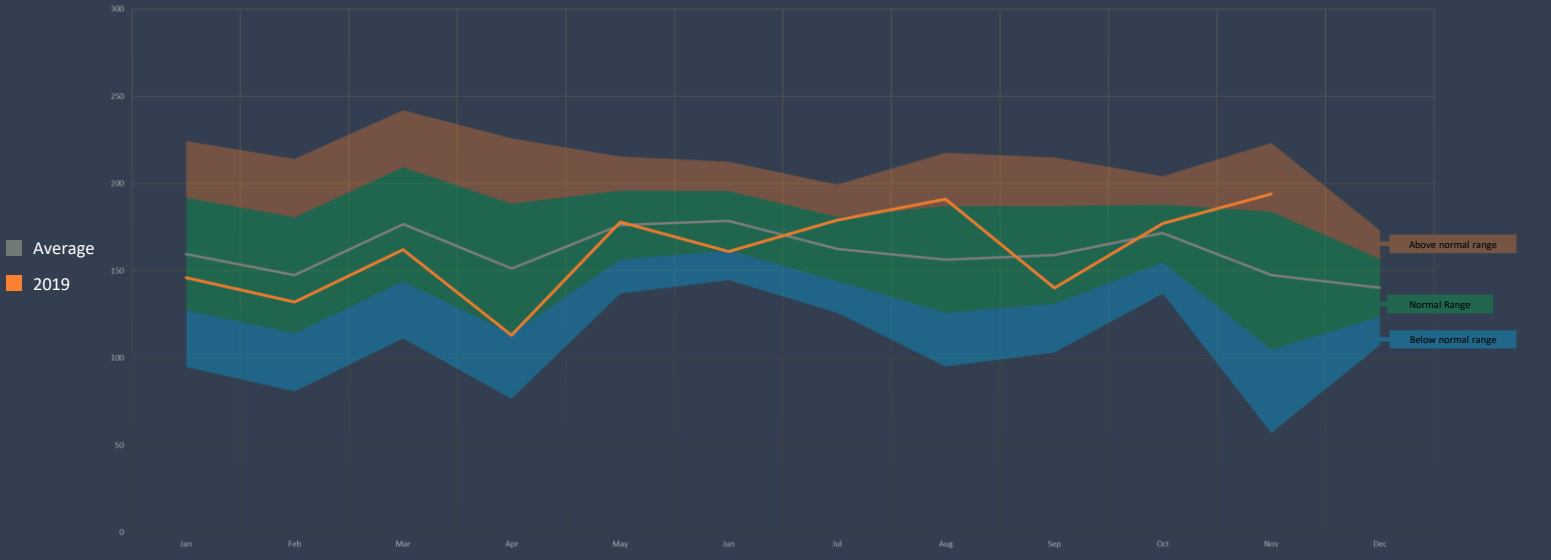




Parker Police Department Monthly Crime Summary



Total Crimes by Month - 5 Year Average



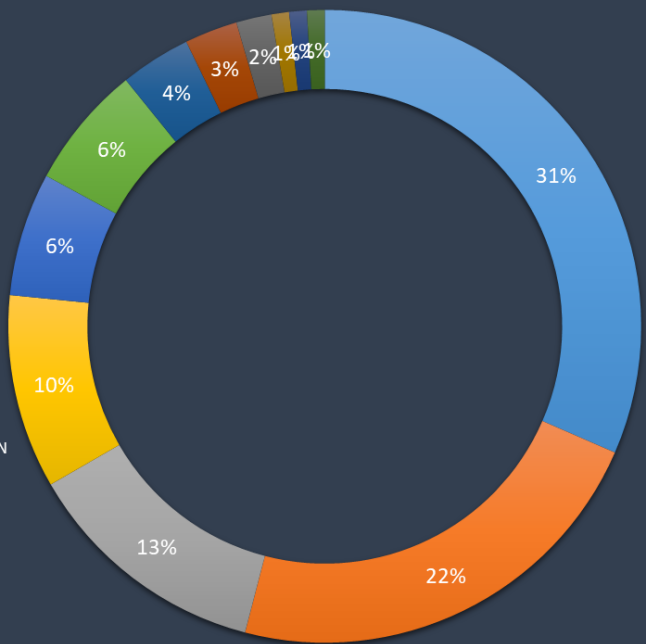


Parker Police Department

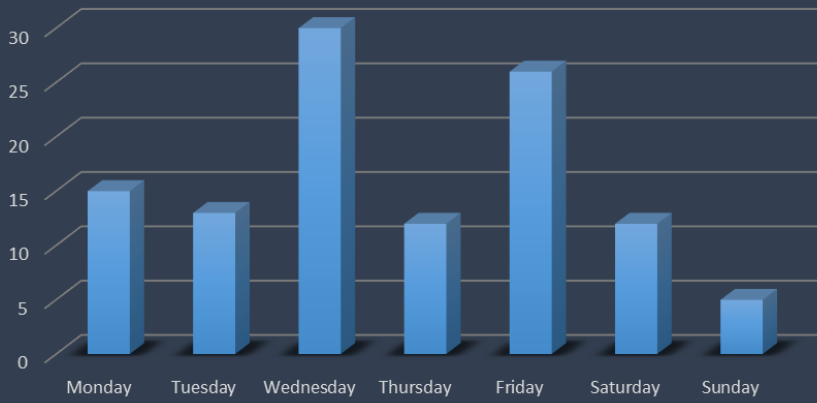
Monthly Crime Summary

Total Traffic Accidents: 113

- FRONT TO REAR
- FRONT TO SIDE
- OTHER OBJECT
- SIDE TO SIDE-SAME DIRECTION
- FRONT TO FRONT
- CURB
- SIGN
- WILD ANIMAL
- REAR TO SIDE
- SIDE TO SIDE -OPPOSITE DIRECTION
- OTHER FIXED OBJECT
- PARKED MOTOR VEHICLE



Accidents by Day of Week



Accidents by Time of Day

